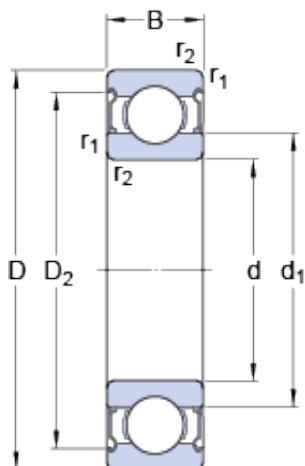




ABEC BEARING SERIES LTD



6208-2Z Bearing 2D drawings and 3D CAD models

SKF ball bearing 6208-2Z deep groove ball bearing

Bearing No. 6208-2Z

Size	80x40x18 mm
Bore Diameter	80 mm
Outer Diameter	40 mm
Width	18 mm
d	40 mm
D	80 mm
B	18 mm
d ₁	52.6 mm
D ₂	69.8 mm
r _{1,2} - min.	1.1 mm
d _a - min.	47 mm
d _a - max.	52.5 mm
D _a - max.	73 mm
r _a - max.	1 mm
Basic dynamic load rating - C	32.5 kN
Basic static load rating - C ₀	19 kN
Fatigue load limit - P _u	0.8 kN
Reference speed	18000 r/min
Limiting speed	9000 r/min
Calculation factor - k _r	0.025
Calculation factor - f ₀	13.8
Category	Single Row Ball Bearings
Inventory	1.0
Manufacturer Name	SKF



ABEC BEARING SERIES LTD

Minimum Buy Quantity	N/A
Weight / Kilogram	0.382
EAN	7316570420982
Product Group	B00308
Enclosure	2 Metal Shields
Precision Class	ABEC 1 ISO P0
Maximum Capacity / Filling Slot	No
Rolling Element	Ball Bearing
Snap Ring	No
Internal Special Features	No
Cage Material	Steel
Internal Clearance	C0-Medium
Inch - Metric	Metric
Long Description	40MM Bore; 80MM Outside Diameter; 18MM Outer Race Diameter; 2 Metal Shields; Ball Bearing; ABEC 1 ISO P0; No Filling Slot; No Snap Ring; No Internal Special Features
Category	Single Row Ball Bearing
UNSPSC	31171504
Harmonized Tariff Code	8482.10.50.68
Noun	Bearing
Keyword String	Ball
Manufacturer URL	http://www.skf.com
Manufacturer Item Number	6208-2Z
Weight / LBS	0.84
Outer Race Width	0.709 Inch 18 Millimeter
Outside Diameter	3.15 Inch 80 Millimeter
Bore	1.575 Inch 40 Millimeter
d ₁	52.6 mm
D ₂	69.8 mm



ABEC BEARING SERIES LTD

$r_{1,2}$ min.	1.1 mm
d_a min.	47 mm
d_a max.	52.5 mm
D_a max.	73 mm
r_a max.	1 mm
Basic dynamic load rating C	32.5 kN
Basic static load rating C_0	19 kN
Fatigue load limit P_u	0.8 kN
Calculation factor k_r	0.025
Calculation factor f_0	13.8
Mass bearing	0.38 kg