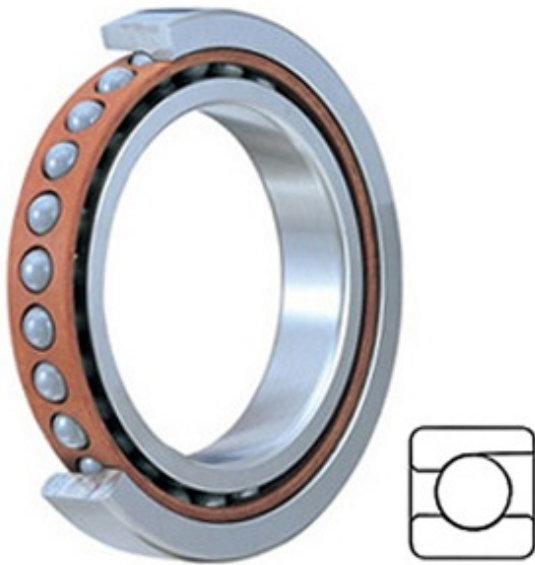




ABEC BEARING SERIES LTD



2MM209WI Bearing 2D drawings and 3D CAD models

1.772 Inch | 45 Millimeter x 3.346 Inch | 85 Millimeter x 0.748 Inch | 19 Millimeter TIMKEN 2MM209WI Precision Ball Bearings

Bearing No. 2MM209WI

Category	Precision Ball Bearings
Inventory	0.0
Manufacturer Name	TIMKEN
Minimum Buy Quantity	N/A
Weight	0.431
EAN	0087796070417
Product Group	B04270
Enclosure	Open
Precision Class	ABEC 7 ISO P4
Material - Ball	Steel
Number of Bearings	1 (Single)
Contact Angle	15 Degree
Preload	None
Raceway Style	1 Rib Outer Ring
Cage Material	Phenolic
Rolling Element	Ball Bearing
Flush Ground	No
Inch - Metric	Metric
Other Features	Single Row Angular Contact Super High Precision
Long Description	45MM Bore; 85MM Outside Diameter; 19MM Width; Open Enclosure; ABEC 7 ISO P4 Precision; Steel Ball Material; 1 (Single) Bearings; 15 Degree



ABEC BEARING SERIES LTD

	Contact Angle; Phenolic Cage Material; 1 Rib Outer Ring Rac
Category	Precision Ball Bearings
UNSPSC	31171531
Harmonized Tariff Code	8482.10.50.28
Noun	Bearing
Keyword String	Angular Contact Ball
Manufacturer URL	http://www.timken.com
Manufacturer Item Number	2MM209WI
Weight / LBS	0.95
D	3.346 Inch 85 Millimeter
d	1.772 Inch 45 Millimeter
B	0.748 Inch 19 Millimeter
d - Bore	45 mm
D - Outer Diameter	85 mm
Bearing Width	19.0 mm
do - Ball Diameter	12.700 mm
C0 - Static Radial Rating	28800 N
Ce - Dynamic Radial Rating ¹	45200 N
Limiting Speed (Grease)	17500 rpm
Limiting Speed (Oil)	35000 rpm
Ball Type	STEEL
Cage Type	CR - Phenolic Outer Land Riding Cage
Bearing Weight	0.408 Kg
Design Units	METRIC
Full Timken Part Number	2MM209WICR
R - Inner Ring To Clear Radius ²	1.0 mm
r - Outer Ring To Clear Radius ³	1.0 mm
da - Inner Ring Backing	52.300 mm



ABEC BEARING SERIES LTD

Diameter	
Da - Outer Ring Backing Diameter	78.200 mm